

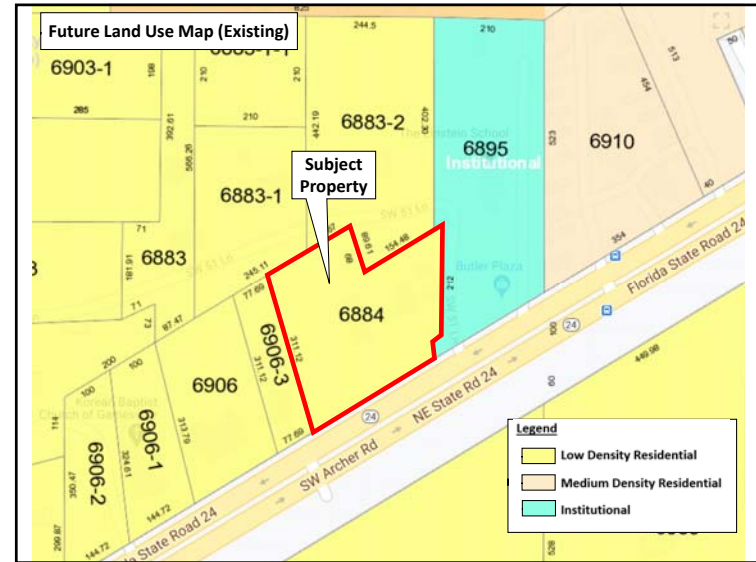
### Meeting Guidelines

- This meeting is informational only
- It is required as a part of the Alachua County review process
- You have been muted upon entering
- If you have a question, either:
  - Unmute yourself to speak
  - Type your question in the chat box

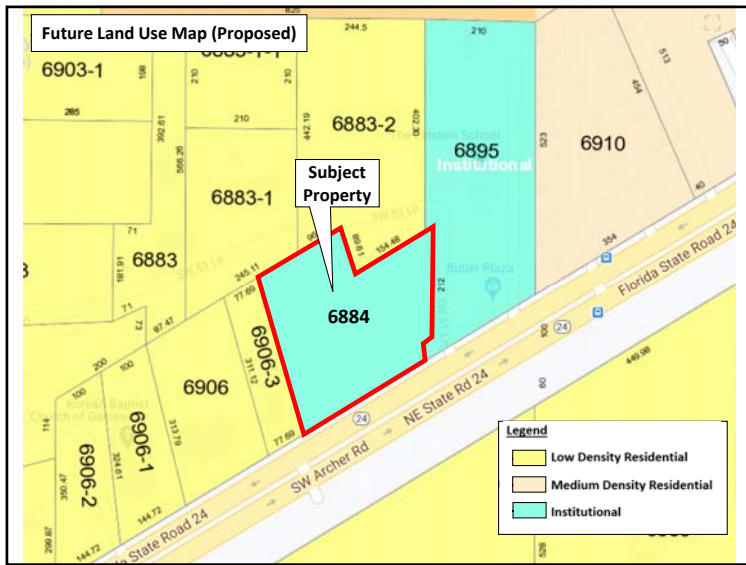
UNMUTE/MUTE      CHAT

edc **Proposed Land Use Map Change**  
 consultants · inc.      Neighborhood Meeting  
 Tuesday, February 23, 2021

1



2



3

### Thank you!

Any questions? Email [olazzari@edafi.com](mailto:olazzari@edafi.com) or call 352-373-3541.

Presentation will be posted to: <http://edafi.com/neighborhoodworkshops>.

edc  
 consultants · inc.

4