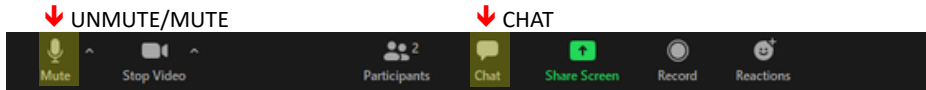


Meeting Guidelines

- This meeting is informational only
- It is required as a part of the Alachua County review process
- You have been muted upon entering
- If you have a question, either:
 - Unmute yourself to speak
 - Type your question in the chat box



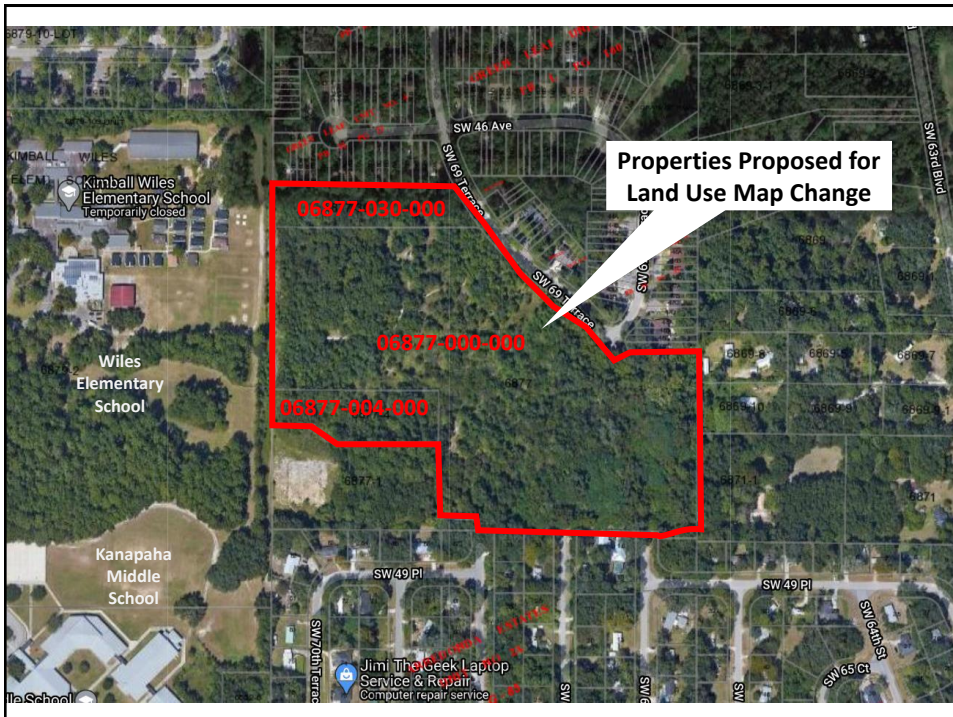
Proposed Land Use Map Change

Neighborhood Meeting
Monday, April 19, 2021

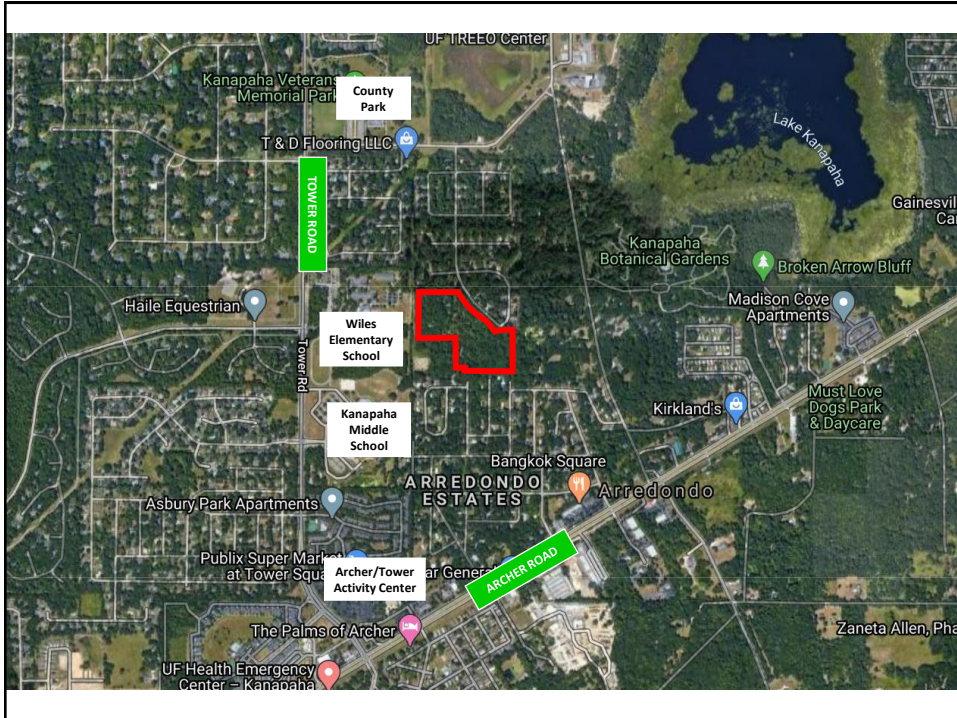


eda
consultants · inc.

1



2

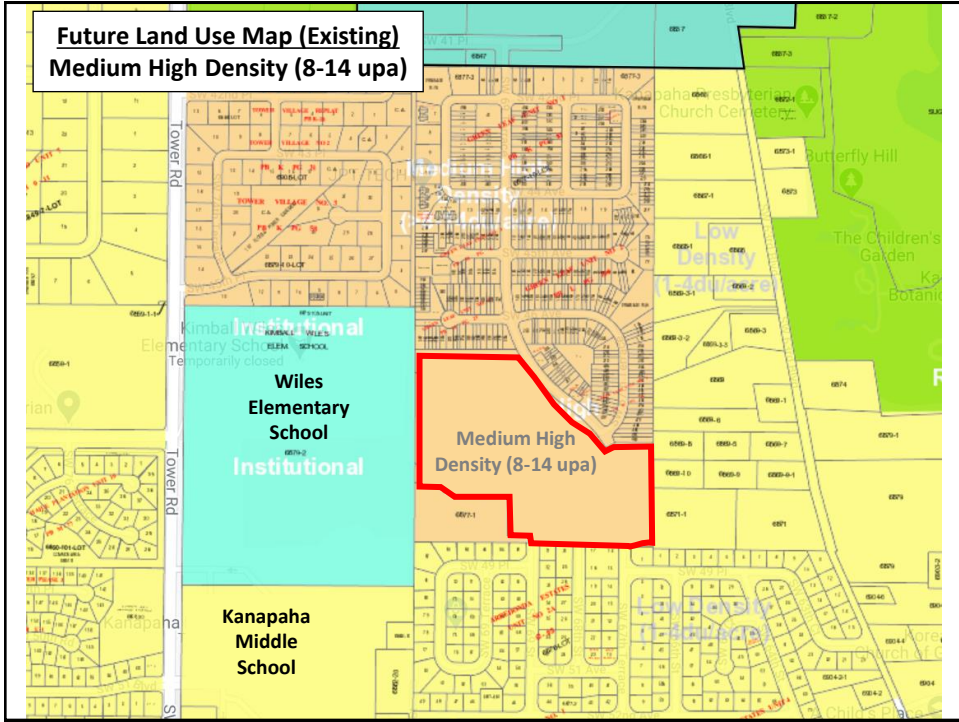


3

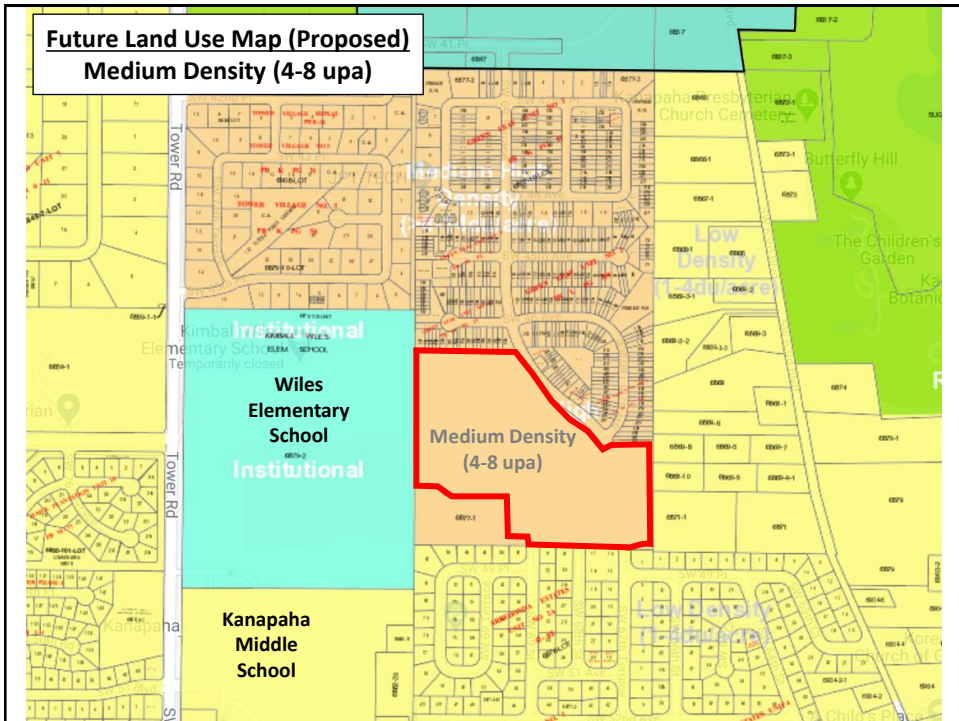
Land Use Map Change Summary

A proposed land use map change on approximately 22.3 acres (parcel numbers 06877-000-000, 06877-030-000 & 06877-004-000) from Medium High Density Residential (allowing a residential density of 8-14 units per acre) to Medium Density Residential (allowing a residential density of 4-8 units per acre).

4



5



6