



Tara Vista Residential Subdivision

Alachua County

**January 30, 2022
Neighborhood Meeting**

Meeting Guidelines

- This meeting is informational only
- It is required as a part of the Alachua County review process

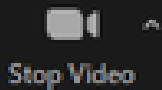
- You have been muted upon entering
- If you have a question, either:
 - Unmute yourself to speak
 - Type your question in the chat box

↓ UNMUTE/MUTE

↓ CHAT



Mute



Stop Video



Participants



Chat



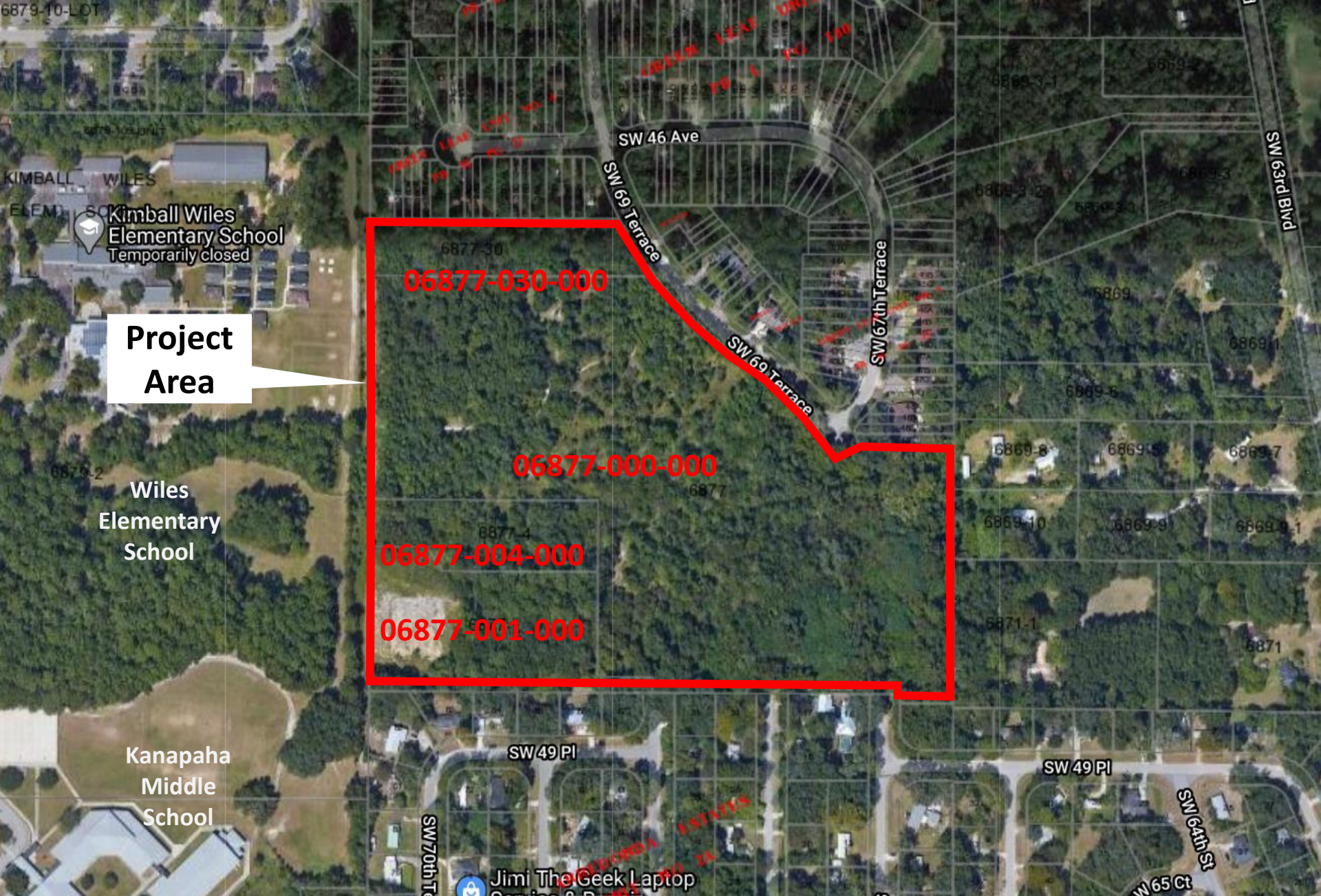
Share Screen



Record



Reactions



Kimball Wiles Elementary School
Temporarily closed

Project Area

Wiles Elementary School

Kanapaha Middle School

06877-030-000

06877-000-000

06877-004-000

06877-001-000

SW 49 Pl

SW 49 Pl

SW 70th Tr

Jimi The Geek Laptop

SW 64th St

SW 65 Ct

Property Summary

Size:

Approx. 25.6 Acres

Location:

SW 69th Terrace

Tax Parcel Numbers:

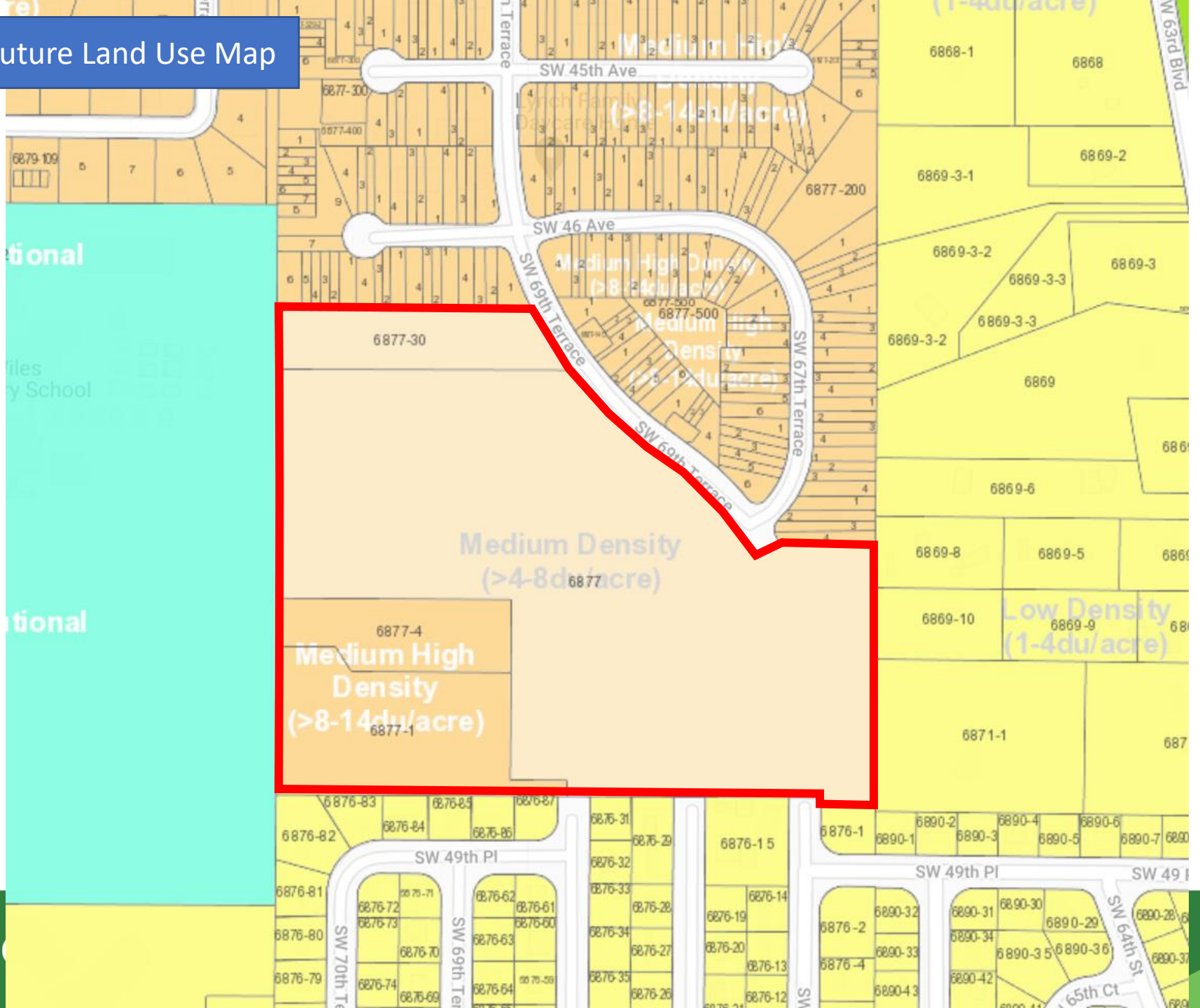
06877-030-000, 06877-000-000, 06877-004-000 and 06877-001-000

Future Land Use & Zoning:

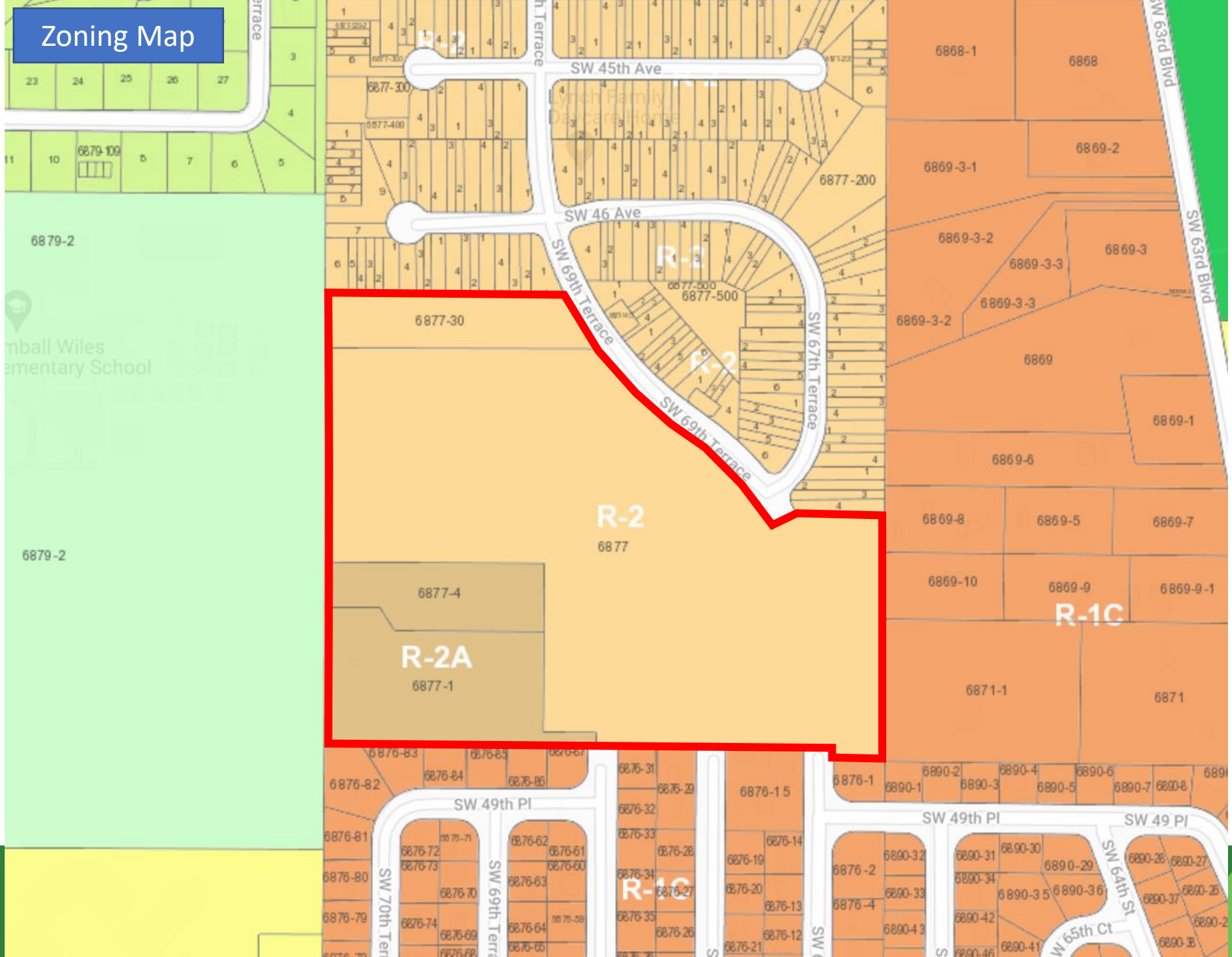
Medium & Medium High Density Residential Land Use Designations

R-2 & R-2a Zoning Districts

Future Land Use Map

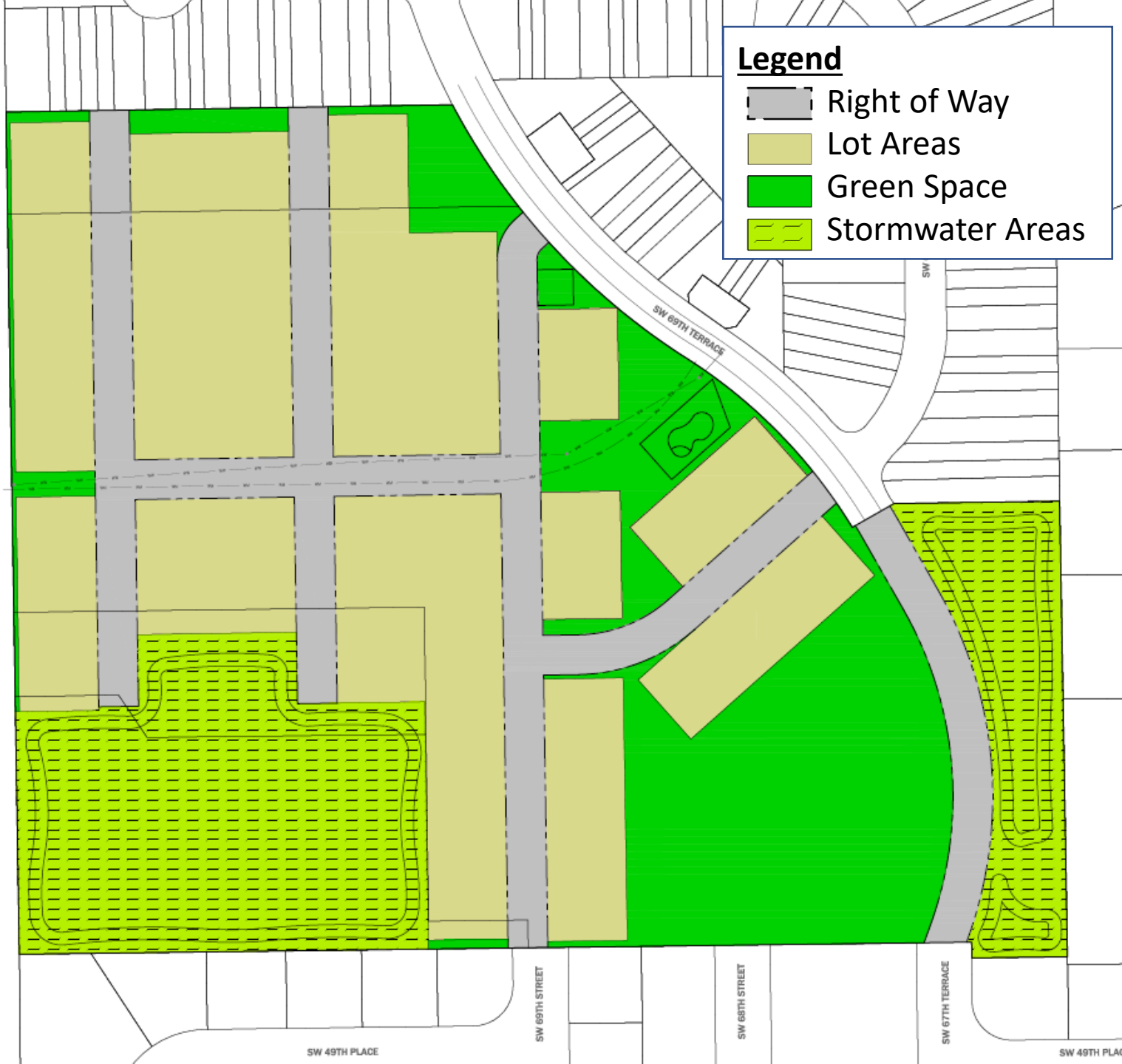


Zoning Map



Project Type:

- Single Family Attached Subdivision
- Up to 215 Lots
- Permitted in current Land Use & Zoning Districts



Next Steps

- Neighborhood Workshop
 - Today – January 30, 2022
- Development Plan Submittal and Review Process, Board of County Commissioners Public Hearing
 - Tentatively planned for Spring 2022 (Date TBD)

Presentation will be posted to: <http://edafl.com/neighborhoodworkshops>

Any follow-up questions? Email sreyes@edafl.com or call 352-373-3541