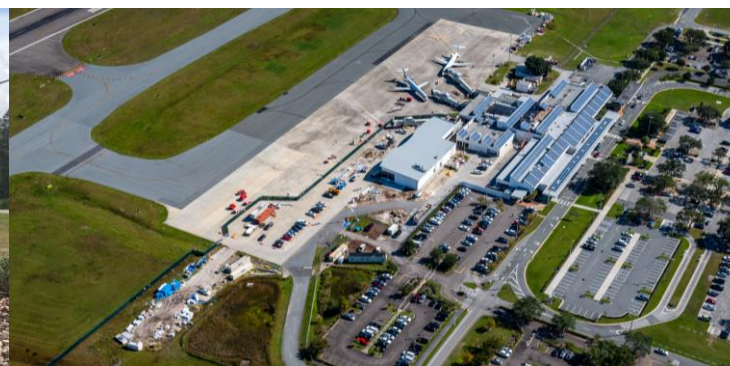


# Gainesville Regional Airport



**Taxiway A Extension, Modification  
and Rehabilitation Work**



[illegible]





# Taxiway A Extension, Modification and Rehabilitation

## Project Description and Goals

- **Extend Taxiway A to provide an end-around connection to Taxiway E and Runway 11-29 and connect to Runway 7 with 90-degree angles to meet FAA criteria.**
- **Rehabilitate asphalt pavement that is old and in poor condition to extend the life of the pavement.**
- **Reconstruct asphalt pavement that is not strong enough for corporate aircraft**
- **Widen taxiway connectors between Taxiway A and the Apron areas to meet current FAA criteria**
- **Construct new aircraft Hold Pads to meet FAA criteria and increase airfield capacity**
- **Reconstruct a portion of Taxiway C to meet FAA criteria**
- **Replace aged and deteriorated drainage piping**
- **Remove old unused pavement areas - net decrease of 1.87-acres of impervious pavement area**
- **Install new low energy LED edge lighting and airfield signage system**
- **Construct scour prevention and minor repairs of the aluminum arch culvert that crosses under Taxiway A**
- **Stormwater/Permitting is designed to minimize treatment areas near the runways and taxiways, meet TMDL criteria, follow City and SJRWMD permitting processes, and minimize wildlife attractants at the airport**



