



# **Alachua County Court Complex Proposed Site Plan Parking Structure & Accessory Energy Facility**

Neighborhood Workshop April 29, 2024

# Meeting Guidelines

- This meeting is informational only
- It is required as a part of the City of Gainesville review process
- You have been muted upon entering
- If you have a question, either:
  - Unmute yourself to speak
  - Type your question in the chat box

↓ UNMUTE/MUTE

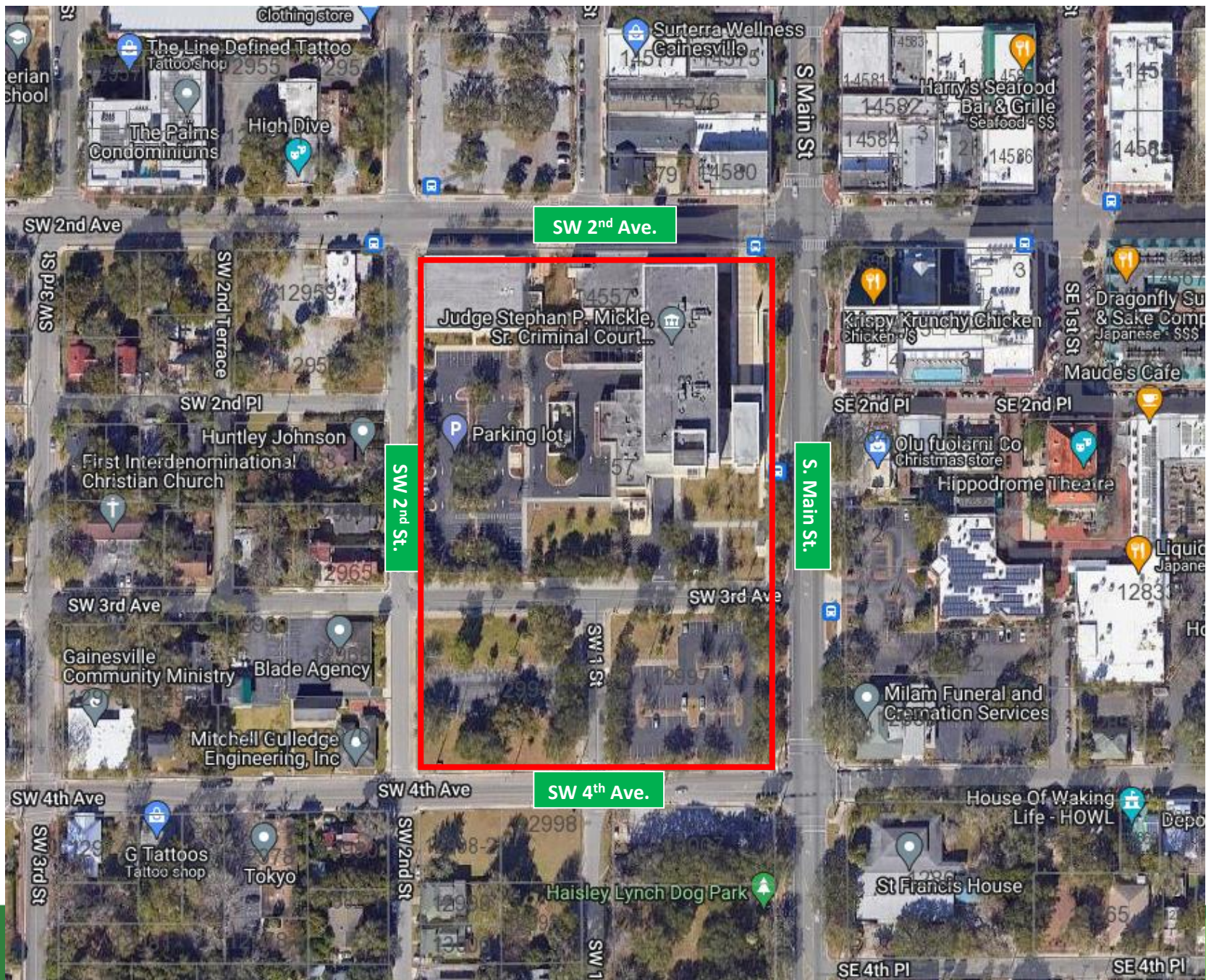
↓ CHAT



# Agenda

- Introductions
- Project Location & Background
- Description Proposed Project
- Next Steps
- Contact Information
- Questions







# City of Gainesville Zoning Map

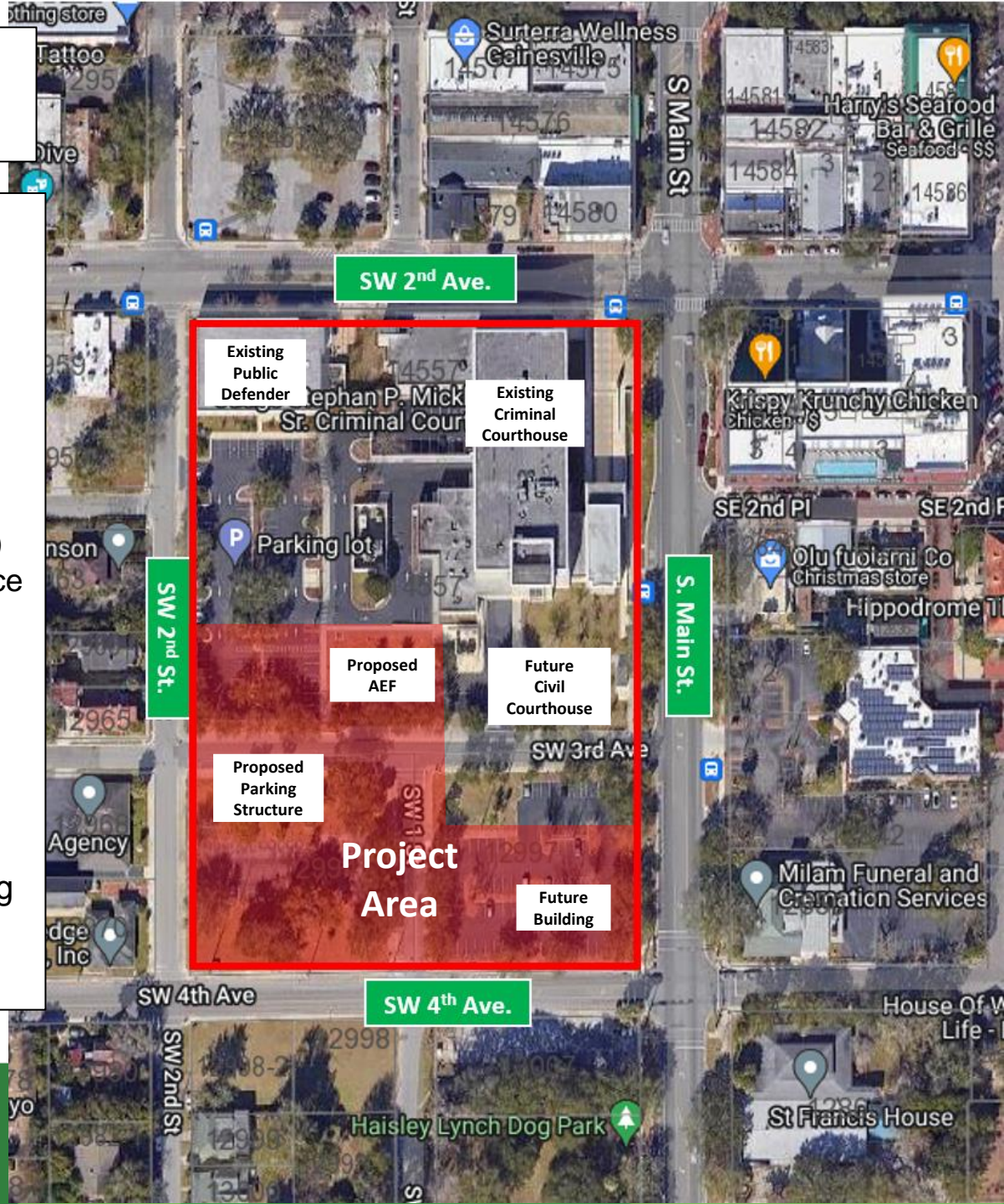
The map displays the following zoning districts and landmarks:

- Zoning Districts:** DT (Downtown), MU1 (Medium Density Residential), PD (Professional Office), U6 (Neighborhood Center).
- Streets:** SW 2nd Ave, SW 3rd Ave, SW 4th Ave, SW 2nd St, SW 3rd St, S Main St, SE 1st St, SE 2nd St, SE 4th St.
- Landmarks:** Judge Stephan P. Mickle Sr. Criminal Court, Hartsley Lynch Dog Park, St. Francis House, House of Waking Life - HOWL, Blade Agency, Gainesville Community Ministry, Blade Agency, Hartsley Lynch Dog Park, Hartsley Lynch Dog Park, Hartsley Lynch Dog Park.

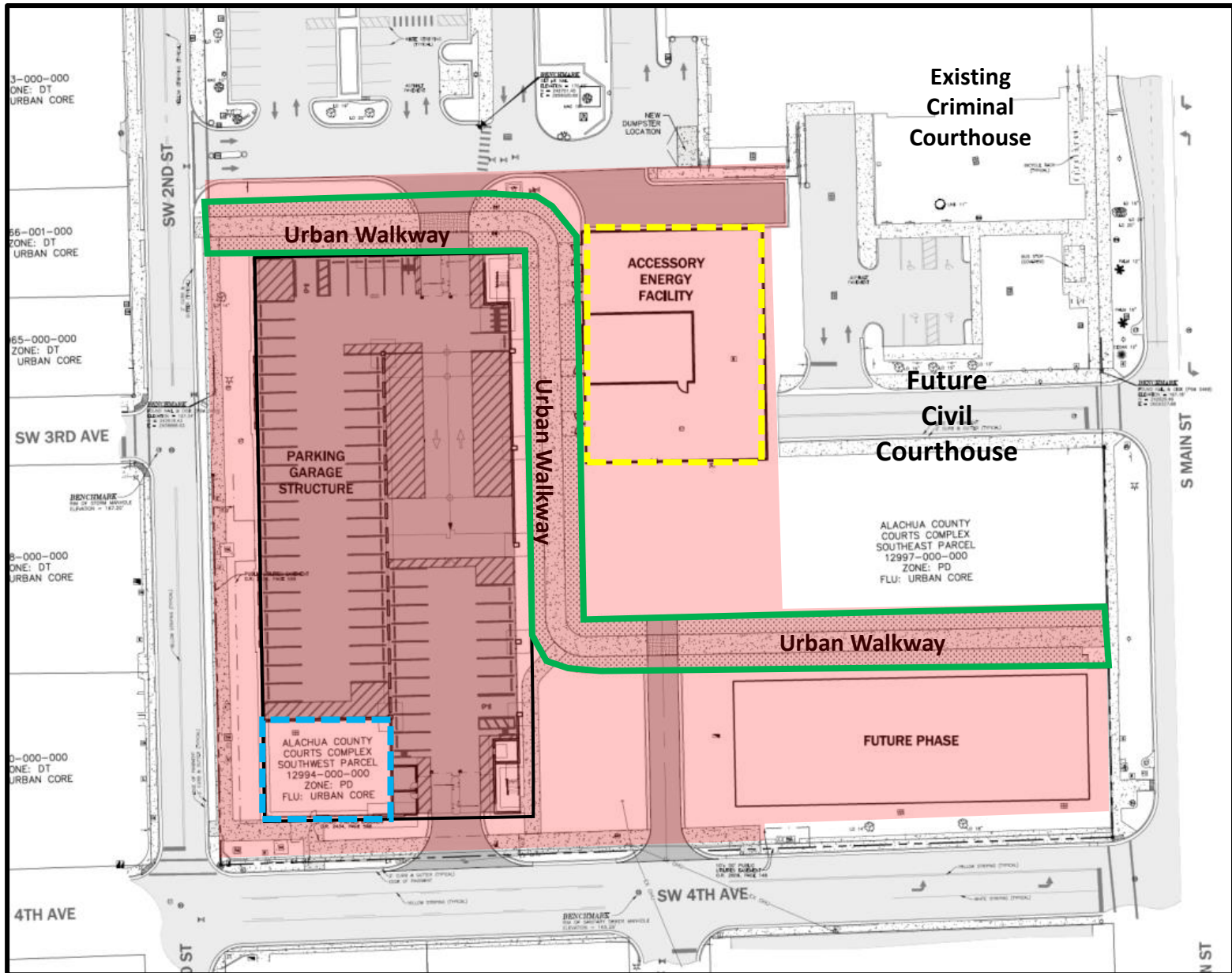


# Alachua County Court Complex

- Consists of 1 City Block
- Current Uses:
  - Criminal Courthouse
  - Public Defender Office
  - Parking
- Future Plans:
  - Civil Courthouse Relocation
  - Parking Structure
  - Accessory Energy Facility (AEF)
  - Other Court-Related Office Space
  - These Improvements will be Phased over Several Years
- Recent Activity:
  - Property Zoning (Amendment to Planned Development)
  - Vacation of Right of Way
- Current Proposal:
  - Proposed Site Plan for Parking Structure, AEF & Urban Walkway

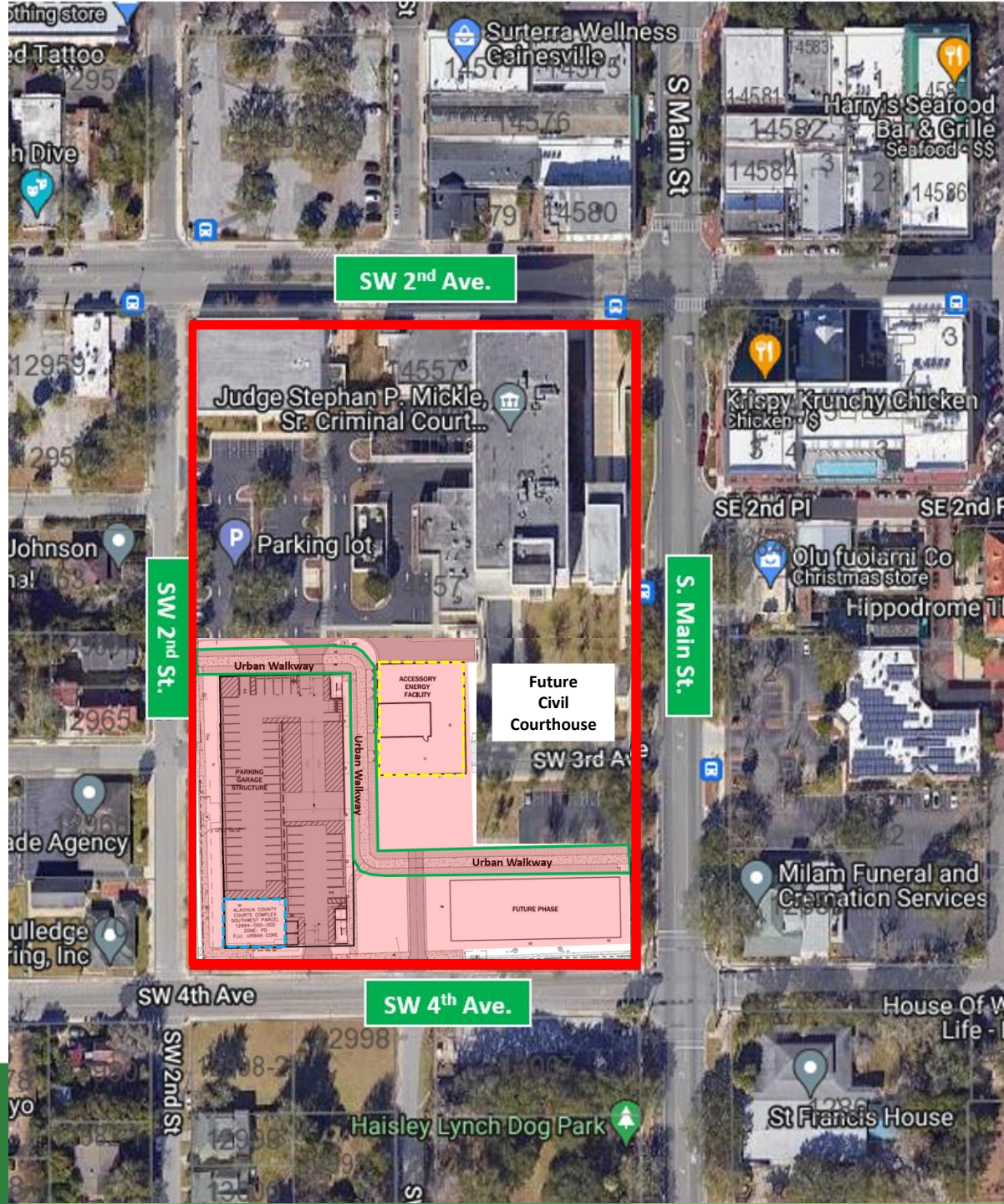


# Proposed Site Plan Areas



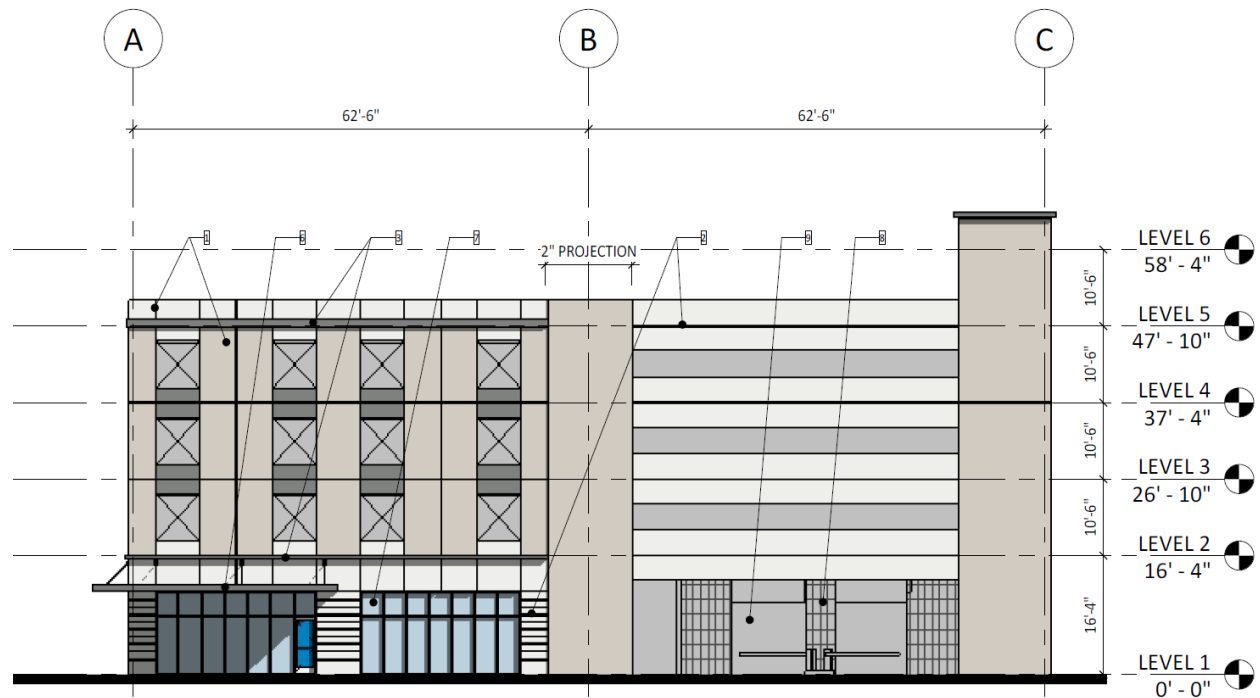


# Alachua County Court Complex Overlay

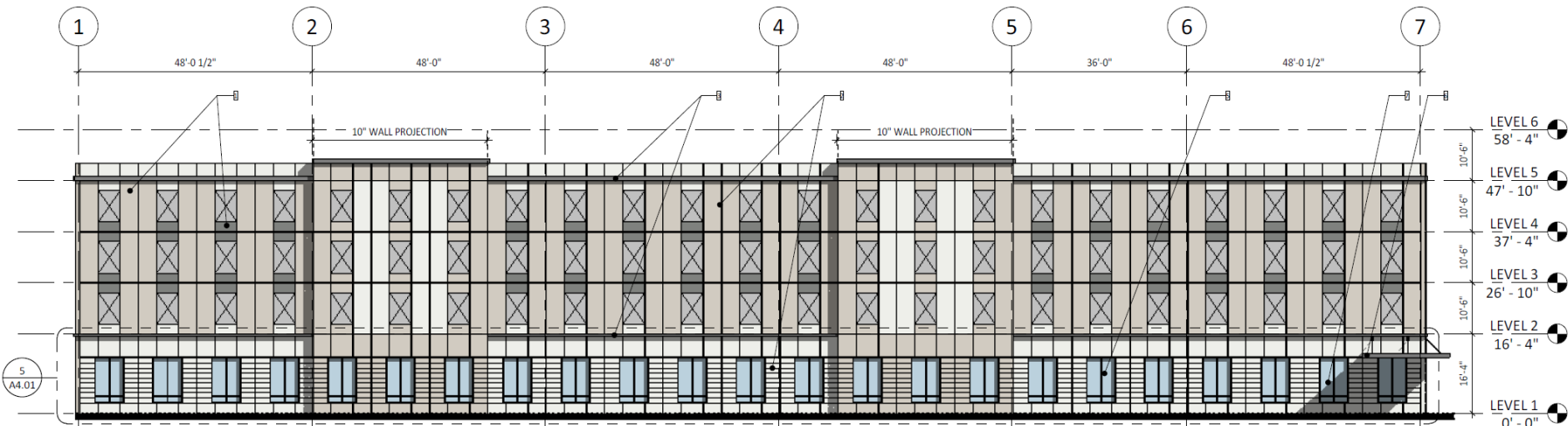




# Parking Structure Elevations



**3 SOUTH BUILDING ELEVATION**  
A4.01 1/16" = 1'-0"



**4 WEST BUILDING ELEVATION**  
A4.01 1/16" = 1'-0"

# Parking Structure Renderings





# Next Steps

- eda will submit the Site Plan applications to the City of Gainesville
- City of Gainesville will review the applications
- City of Gainesville will notify neighboring property owners of the public hearing before the Development Review Board (Parking Structure)
- Development Review Board Date – TBD
- New Civil Courthouse – Soon

# Contact Information

- Person: Sergio Reyes
- Phone: (352) 373-3541
- Email: [permitting@edafl.com](mailto:permitting@edafl.com)
- Web site: [www.edafl.com/neighborhoodworkshops](http://www.edafl.com/neighborhoodworkshops)
- Mail: 720 SW 2<sup>nd</sup> Avenue  
South Tower, Suite 300  
Gainesville, FL 32601



# Questions