

Scottish Inn Redevelopment

Neighborhood Workshop

July 29, 2024



Meeting Guidelines

- This meeting is informational only
- It is required as a part of the Alachua County review process

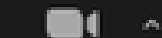
- You have been muted upon entering
- If you have a question, either:
 - Unmute yourself to speak
 - Type your question in the chat box

↓ UNMUTE/MUTE

↓ CHAT



Mute



Stop Video



Participants



Chat



Share Screen



Record



Reactions

Project Summary

- Tax Parcel Number: 07218-001-000 (Portion of)
- Location: 4341 SW 13th Street
- Future Land Use Map Designation: Commercial
- Zoning District: Highway Oriented Business (BH)

- **Proposed Action: A combined Preliminary / Final Development Plan for up to 29 multifamily residential units on approximately 1.5 acres**

- Other existing improvements on site will remain – building renovations for 31 existing units will be permitted as a separate project.

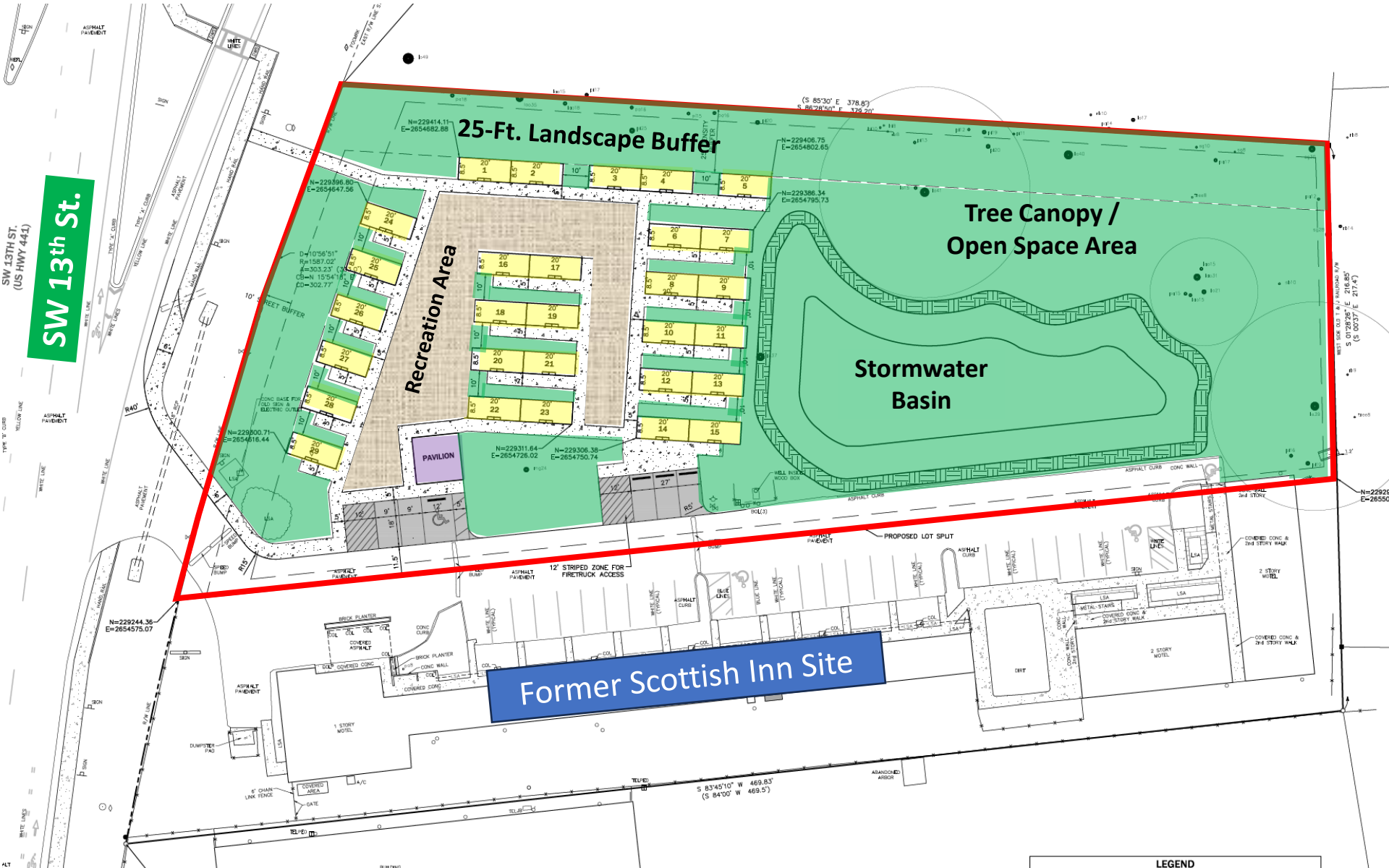


Location Map / Aerial Photo



Subject Property
4341 SW 13th Street
Parcel No. 7218-001-000
(Portion of)

Proposed Development Plan

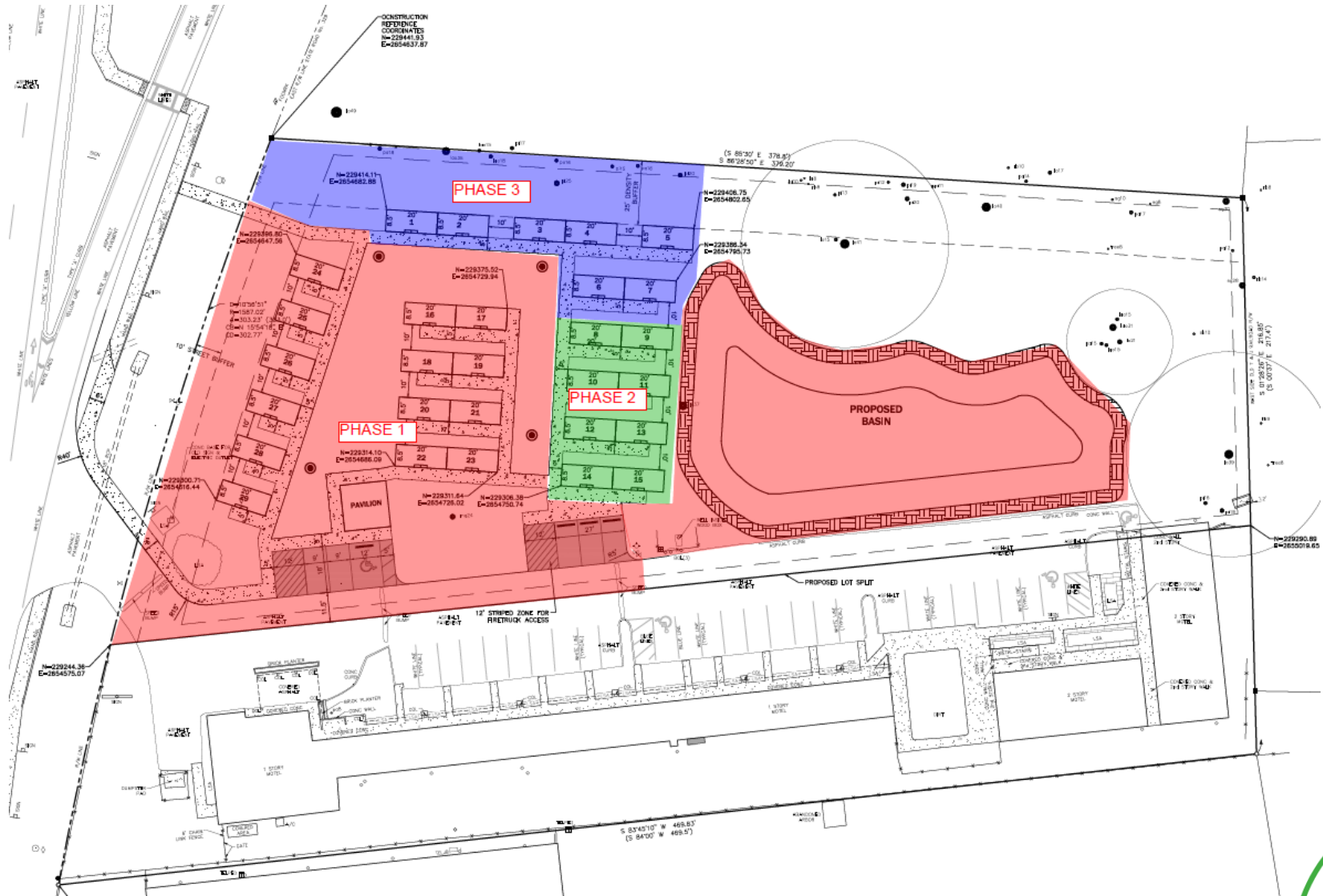


SW 13th St.

Former Scottish Inn Site

LEGEND

Proposed Phasing Plan



Residential Unit Prototype

Affordable Housing Units

- Proposed container homes
- 1 or 2 units per building



Next Steps

- Neighborhood Workshop – July 29, 2024
- Preliminary / Final Development Plan
 - County Submittal – Anticipated August/Sept. 2024
 - Development Review Committee – Tentatively Fall 2024



Presentation will be posted to: <http://edafl.com/neighborhoodworkshops>

Follow-up questions? Email permitting@edafl.com or call 352-373-3541



Questions?